

The butterflies and moths of Monkwood Green by Dr Christopher Betts

Butterflies

small skipper	<i>Thymelicus sylvestris</i>
Essex skipper	<i>Thymelicus lineola</i>
large skipper	<i>Ochlodes sylvanus</i>
wood white	<i>Leptidea sinapis</i> (comes in from Monkwood)
clouded yellow	<i>Colias croceus</i> (migrant)
brimstone	<i>Gonepteryx rhamni</i>
large white	<i>Pieris brassicae</i>
small white	<i>Pieris rapae</i>
green-veined white	<i>Pieris napi</i>
orange tip	<i>Anthocharis cardamines</i>
purple hairstreak	<i>Neozephyrus quercus</i>
white-letter hairstreak	<i>Satyrium w-album</i>
small copper	<i>Lycaena phlaeas</i>
brown argus	<i>Aricia agestis</i>
common blue	<i>Polyommatus icarus</i>
holly blue	<i>Celastrina argiolus</i>
silver-washed fritillary	<i>Argynnis paphia</i>
white admiral	<i>Limenitis camilla</i>
red admiral	<i>Vanessa atalanta</i>
painted lady	<i>Vanessa cardui</i> (migrant)
small tortoiseshell	<i>Aglais urticae</i>
peacock	<i>Aglais io</i>
comma	<i>Polygonia c-album</i>
speckled wood	<i>Pararge aegeria</i>
marbled white	<i>Melanargia galathea</i>
gatekeeper	<i>Pyronia tithonus</i>
meadow brown	<i>Maniola jurtina</i>
ringlet	<i>Aphantopus hyperantus</i>



Photos above (from top left): wood white, gatekeeper, holly blue, painted lady, female orange tip.

The butterflies and moths of Monkwood Green by Dr Christopher Betts

Moths

Please note when consulting this list that the great majority of moth records are from ultra-violet light trapping (Robinson Mercury Vapour 125W Light Trap) since 1985. The range of the trap extends beyond Monkwood Green and into adjacent areas of Monkwood. Some species listed will not therefore occur strictly within the Green's boundaries even if they fly over it. The list is also short of records of day-flying and micro-species. I continue to add to it.

Moths of the Monkwood area recorded over three decades up to 2021 by Dr C J Betts. Most records are from a, plus some casual recordings. Many microlepidoptera and some day-flying moths are missing from this list¹.

NB. Some of the scientific nomenclature requires updating but this list generally follows Bradley, J. (2000) (2nd edn.) Checklist of *LEPIDOPTERA* recorded from the British Isles, Fordingbridge, UK. Photos are available of many.

alder kitten	<i>Furcula bicuspis</i>
alder moth	<i>Acrionicta alni</i>
angle shades	<i>Phlogophora meticulosa</i>
angle-striped sawfly	<i>Enargia paleacea</i>
antler moth	<i>Cerapteryx graminis</i>
August thorn	<i>Ennomos quercinaria</i>
autumnal moth	<i>Epirrita autumnata</i>
autumnal rustic	<i>Eugnorisma glareosa</i>
barred fruit-tree tortrix	<i>Tortrix pandemis</i>
barred hook-tip	<i>Watsonalla cultraria</i>
barred rivulet	<i>Perizoma bifaciata</i>
barred sawfly	<i>Tiliacea aurago</i>
barred straw	<i>Gandaritis pyraliata</i>
barred umber	<i>Pagodis pulveraria</i>
barred yellow	<i>Cidaria fulvata</i>
beaded chestnut	<i>Agrochola lychnidis</i>
beautiful golden Y	<i>Autographa pulchrina</i>
beautiful hook-tip	<i>Laspeyria flexula</i>
birch marble	<i>Apotomis betuletana</i>
bird's wing	<i>Dypterygia scabriuscula</i>
black arches	<i>Lymantria monacha</i>
black rustic	<i>Aporophyla nigra</i>
Blair's shoulder-knot	<i>Lithophane leautieri</i>
blood-vein	<i>Timandra comae</i>
blossom underwing	<i>Orthosia miniosa</i>
blotched emerald	<i>Comibaena bajularia</i>
blue-bordered carpet	<i>Plemyria rubiginata</i>
bordered beauty	<i>Epione repandaria</i>
brick, the	<i>Agrochola circumcellaris</i>
bright-line brown-eye	<i>Lacanobia oleracea</i>
brimstone moth	<i>Opisthographis luteolata</i>
brindled argent	<i>Argyresthia curvella</i>
brindled beauty	<i>Lycia hirtaria</i>

¹ NB. Some of the scientific nomenclature requires updating but this list generally follows Bradley, J. (2000) (2nd edn.) Checklist of *LEPIDOPTERA* recorded from the British Isles, Fordingbridge, UK. Photos are available of many.

The butterflies and moths of Monkwood Green by Dr Christopher Betts

brindled green	<i>Dryobotodes eremita</i>
brindled pug	<i>Eupithecium abbreviata</i>
brindled white-spot	<i>Parectropis similaria</i>
broad-bordered yellow underwing	<i>Noctua fimbriata</i>
broken-barred carpet	<i>Electrophaes corylata</i>
brown china-mark	<i>Elophila nymphaeata</i>
brown house moth	<i>Hofmannophila pseudospretella</i>
brown-line bright-eye	<i>Mythimna conigera</i>
brown-spot pinion	<i>Agrochola litura</i>
brown rustic	<i>Rusina ferruginea</i>
brown-tail	<i>Euproctis chrysorrhoea</i>
Brussels lace	<i>Cleorodes lichenaria</i>
buff arches	<i>Habrosyne pyritoides</i>
buff ermine	<i>Spilosoma luteum</i>
buff footman	<i>Eilema depressa</i>
buff longhorn	<i>Nematopogon metaxella</i>
buff-tip	<i>Phalera bucephala</i>
bulrush veneer	<i>Calamotropha paludella</i>
burnet companion	<i>Euclidia glyphica</i>
burnished brass	<i>Diachrysia chrysitis</i>
canary-shouldered thorn	<i>Ennomos alniaria</i>
centre-barred sallow	<i>Atethmia centrigo</i>
chestnut, the	<i>Conistra vaccinii</i>
chevron, the	<i>Eulithis testata</i>
Chinese character	<i>Cilix glaucata</i>
chocolate-tip	<i>Clostera curtula</i>
cinnabar	<i>Tyria jacobaeae</i>
clay, the	<i>Mythimna ferrago</i>
clay triple-lines	<i>Cyclophora linearia</i>
clouded border	<i>Lomaspilis marginata</i>
clouded-bordered brindle	<i>Apamea crenata</i>
clouded brindle	<i>Apamea epomidion</i>
clouded drab	<i>Orthosia incerta</i>
clouded silver	<i>Lomohrapha temerata</i>
common carpet	<i>Epirrhoe alternata</i>
common emerald	<i>Hemithea aestivaria</i>
common footman	<i>Eilema lurideola</i>
common grey	<i>Scoparia ambigualis</i>
common lutestring	<i>Ochroplacha duplaris</i>
common marble	<i>Celypha lacunana</i>
common marbled carpet	<i>Chloroclysta truncata</i>
common oak purple	<i>Dyseriocrania subpurpurella</i>
common pug	<i>Eupithecia vulgata</i>
common quaker	<i>Orthosia cerasi</i>
common rustic	<i>Mesapamea secalis</i>
common swift	<i>Hepialus lupulinus</i>
common wainscot	<i>Mythimna pallens</i>
common wave	<i>Cabera exanthemata</i>
common white wave	<i>Cabera pusaria</i>
common yellow conch	<i>Agapeta hamana</i>
copper underwing	<i>Amphipyra pyramidea</i>

The butterflies and moths of Monkwood Green by Dr Christopher Betts

coronet, the	<i>Craniophora ligustri</i>
coxcomb prominent	<i>Ptilodon capucina</i>
cream wave	<i>Scopula floslactata</i>
currant clearwing	<i>Synanthedon tupiliformis</i>
dark arches	<i>Apamea monoglypha</i>
dark-barred twin-spot carpet	<i>Xanthorhoe ferrugata</i>
dark chestnut	<i>Conistra ligula</i>
dark dagger	<i>Acronicta tridens</i>
dark sword-grass	<i>Agrotis ipsilon</i>
December moth	<i>Poecilocampa populi</i>
deep-brown dart	<i>Aporophyla lutulenta</i>
dingy footman	<i>Eilema griseola</i>
dingy shell	<i>Euchoeca nebulata</i>
dot moth	<i>Melanchra persicariae</i>
dotted border	<i>Agriopsis marginaria</i>
dotted clay	<i>Xestia baja</i>
dotted oak knot-horn	<i>Phycita roborella</i>
double square-spot	<i>Xestia triangulum</i>
double-striped pug	<i>Gymnoscelis rufifasciata</i>
drinker, the	<i>Euthrix potatoria</i>
dun bar	<i>Cosmia trapezina</i>
dusky brocade	<i>Apamea remissa</i>
dusky thorn	<i>Ennomos fuscantaria</i>
dwarf cream wave	<i>Idaea fuscovenosa</i>
ear moth	<i>Amphipoea oculea</i>
early grey	<i>Xylocampa areaola</i>
early moth	<i>Theria primaria</i>
early thorn	<i>Selenia dentaria</i>
early tooth-striped	<i>Trichopteryx carpinata</i>
elephant hawk-moth	<i>Deilephila elpenor</i>
engrailed, the	<i>Ectropis crepuscularia</i>
eyed hawk-moth	<i>Smerinthus ocellata</i>
fan-foot, the	<i>Herminia tarsipennalis</i>
feathered gothic	<i>Tholera decimalis</i>
feathered thorn	<i>Colotois pennaria</i>
figure of eight	<i>Diloba caeruleocephala</i>
figure of eighty	<i>Tethea ocularia</i> ssp. <i>octogesimea</i>
flame, the	<i>Axylia putris</i>
flame shoulder	<i>Ochropleura plecta</i>
flounced chestnut	<i>Agrochola helvola</i>
flounced rustic	<i>Luperina testacea</i>
four spotted footman	<i>Lithosia quadra</i>
fox moth	<i>Macrothylacia rubi</i>
frosted green	<i>Polyploca ridens</i>
frosted orange	<i>Gortyna flavago</i>
garden carpet	<i>Xanthorrhoe fluctuata</i>
garden grass veneer	<i>Chrysoteuchia culmella</i>
garden tiger	<i>Arctia caja</i>
ghost moth	<i>Hepialus humuli</i>
gold spot	<i>Plusia festucae</i>
gold swift	<i>Hepialus hecta</i>

The butterflies and moths of Monkwood Green by Dr Christopher Betts

gold triangle	<i>Hypsopygia costalis</i>
grass emerald	<i>Pseudoterpna pruinata</i>
grass rivulet	<i>Perizoma albulata</i>
great oak beauty	<i>Hypomecis roboraria</i>
great prominent	<i>Peridea anceps</i>
great tortrix	<i>Choristoneura hebenstreitella</i>
green arches	<i>Anaplectoides prasina</i>
green-brindled crescent	<i>Allophyes oxyacanthae</i>
green carpet	<i>Colostygia pectinataria</i>
green longhorn	<i>Adela reaumurella</i>
green oak tortrix	<i>Tortrix viridana</i>
green pug	<i>Pasiphila rectangulata</i>
green silver-lines	<i>Pseudoips fagana</i> ssp. <i>britannica</i>
grey arches	<i>Polia nebulosa</i>
grey birch	<i>Aethalura punctulata</i>
grey dagger	<i>Acronicta psi</i>
grey pine carpet	<i>Thera obeliscata</i>
grey pug	<i>Eupithecia subfuscata</i>
grey shoulder-knot	<i>Lithophane ornitopus</i>
ground-moss grey	<i>Eudonia truncicolella</i>
hawthorn moth	<i>Scythropia crataegella</i>
heart and club	<i>Agrotis clavis</i>
heart and dart	<i>Agrotis exclamationis</i>
Hebrew character	<i>Orthosia gothica</i>
hedge rustic	<i>Tholera cespitis</i>
herald, the	<i>Scoliopteryx libatrix</i>
hook-streak grass-veneer	<i>Crambus lathoniellus</i>
hummingbird hawk-moth	<i>Macroglossum stellatarum</i> (seen increasingly)
ingrailed clay	<i>Diarsia mendica</i>
iron prominent	<i>Notodonta dromedarius</i>
July highflyer	<i>Hydriomena furcata</i>
knotgrass	<i>Acronicta rumicis</i> (and ab. <i>Salicis</i>)
lackey, the	<i>Malacosoma neustria</i>
large emerald	<i>Geometra papilionaria</i>
large fruit-tree tortrix	<i>Archips podana</i>
large twin-spot carpet	<i>Xanthorhoe quadrifasiata</i>
large yellow underwing	<i>Noctua pronuba</i>
lead-coloured drab	<i>Orthosia populeti</i>
least black arches	<i>Nola confusalis</i>
leopard moth	<i>Zeuzera pyrina</i>
lesser broad-bordered yellow underwing	<i>Noctua janthe</i>
lesser swallow prominent	<i>Pheosia gnoma</i>
lesser yellow underwing	<i>Noctua comes</i>
light arches	<i>Apamea lithoxylaea</i>
light brocade	<i>Lacanobia w-latinum</i>
light brown apple moth	<i>Epiphyas postvittana</i>
light emerald	<i>Campaea margaritaria</i>
lime hawk-moth	<i>Mimas tiliae</i>
lime-speck pug	<i>Eupithecia centaureata</i>
little emerald	<i>Jodis lactearia</i>
little grey	<i>Eudonia lacustrata</i>

The butterflies and moths of Monkwood Green by Dr Christopher Betts

lobster moth	<i>Stauropus fagi</i>
London dowl	<i>Blastobasis lacticolella</i>
long-horned flat-body	<i>Carcina quercana</i>
lunar marbled brown	<i>Drymonia ruficornis</i>
lunar-spotted pinion	<i>Cosmia pyralina</i>
lunar thorn	<i>Selenia lunularia</i>
lunar underwing	<i>Omphaloscelis lunosa</i>
lunar yellow underwing	<i>Noctua orbona</i>
lychnis, the	<i>Hadena bicruris</i>
magpie, the	<i>Abraxas grossulariata</i>
maiden's blush	<i>Cyclophora punctaria</i>
mallow, the	<i>Larentia clavaria</i>
marbled brown	<i>Drymonia dodonaea</i>
marbled minor	<i>Oligia strigilis</i>
marbled orchard tortrix	<i>Hedya nubiferana</i>
marbled white-spot	<i>Lythacodia pyrarga</i>
March moth	<i>Alsophila aescularia</i>
May highflyer	<i>Hydriomena impluviata</i>
meadow grey	<i>Scoparia pyralella</i>
merveille du jour	<i>Griposia aprilina</i>
middle-barred minor	<i>Oligia fasciuncula</i>
miller, the	<i>Acronicta leporina</i>
minor shoulder-knot	<i>Brachylomia viminalis</i>
mother of pearl	<i>Pleuroptya ruralis</i>
mother Shipton	<i>Callistege mi</i>
mottled beauty	<i>Alcis repandata</i>
mottled pug	<i>Eupithecia exiguata</i>
mottled rustic	<i>Caradrina morpheus</i>
mottled umber	<i>Erannis defoliaria</i>
mouse moth	<i>Amphipyra tragopoginis</i>
mullein, the	<i>Cucullia verbasci</i>
mullein wave	<i>Scopula marginepunctata</i>
muslin moth	<i>Diaphora mendica</i>
northern winter moth	<i>Operophtera fagata</i>
November moth	<i>Epirrita dilutata</i>
nutmeg, the	<i>Anarta trifolii</i>
nut-tree tussock	<i>Colocasia coryli</i>
oak beauty	<i>Biston strataria</i>
oak eggar	<i>Lasiocampa quercus</i>
oak hook-tip	<i>Drepana binaria</i>
oak lutestring	<i>Cymatophorina diluta</i>
olive pearl	<i>Udea olivalis</i>
orange footman	<i>Eilema sororcula</i>
orange pine tortrix	<i>Lozotaeniodes formosana</i>
orange swift	<i>Triodia sylvina</i>
pale brindled beauty	<i>Phigalia pilosaria</i>
pale eggar	<i>Trichiura crataegi</i>
pale lemon sallow	<i>Cirrhia ocellaris</i>
pale mottled willow	<i>Caradrina clavipalpis</i>
pale prominent	<i>Pterosoma palpina</i>
pale-shouldered brocade	<i>Lacanobia thalassina</i>

The butterflies and moths of Monkwood Green by Dr Christopher Betts

pale tussock	<i>Calliteara pudibunda</i>
pea moth	<i>Cydia nigricana</i>
peach blossom	<i>Thyatira batis</i>
pearly underwing	<i>Peridroma saucia</i>
pebble hook-tip	<i>Drepana falcataria</i>
pebble prominent	<i>Eligmodonta ziczac</i>
peppered moth	<i>Biston betularia</i>
petty-whin case-bearer	<i>Coleophora genistae</i>
phoenix, the	<i>Eulithis prunata</i>
pink-barred sallow	<i>Xanthia togata</i>
plain golden Y	<i>Autographa jota</i>
plain wave	<i>Idaea straminata</i>
plum tortrix	<i>Hedya pruniana</i>
poplar grey	<i>Subacronicta megacephala</i>
poplar hawk-moth	<i>Laothoe populi</i>
poplar kitten	<i>Furcula bifida</i>
powdered quaker	<i>Orthosia gracilis</i>
purple bar	<i>Cosmorhoe ocellata</i>
purple-bordered gold	<i>Idaea muricata</i>
purple clay	<i>Diarsia brunnea</i>
purple thorn	<i>Selenia tetralunaria</i>
puss moth	<i>Cerura vinula</i>
red-line quaker	<i>Agrochola lota</i>
red twin-spot carpet	<i>Xanthorhoe spadicearia</i>
red underwing	<i>Catocala nupta</i>
riband wave	<i>Idaea aversata</i>
rosy footman	<i>Miltochrista miniata</i>
rosy minor	<i>Litoligia literosa</i>
rosy rustic	<i>Hydraecia micacea</i>
ruby tiger	<i>Phragmatobia fuliginosa</i>
ruddy highflyer	<i>Hydriomena ruberata</i>
rufous minor	<i>Oligia versicolor</i>
rustic, the	<i>Hoplodrina blanda</i>
rustic shoulder-knot	<i>Apamea sordens</i>
rusty-dot pearl	<i>Udea ferrugalis</i>
sallow, the	<i>Cirrhia icteritia</i>
sallow kitten	<i>Furcula furcula</i>
saltern ear	<i>Amphipoea fucosa</i>
sandy carpet	<i>Perizoma flavifasciata</i>
satellite, the	<i>Eupsilia transversa</i>
scallop shell	<i>Hydria undulata</i>
scalloped hazel	<i>Odontopera bidentata</i>
scalloped hook-tip	<i>Falcaria lacertinaria</i>
scalloped oak	<i>Crocallis elinguaris</i>
scarce footman	<i>Eilema complana</i>
scarce silver-lines	<i>Bena bicolorana</i>
scarce umber	<i>Agriopsis aurantiaria</i>
scarlet tiger	<i>Callimorpha dominula</i>
scorched carpet	<i>Ligdia adustata</i>
scorched wing	<i>Plagiodis pulveraria</i>
September thorn	<i>Ennomos erosaria</i>

The butterflies and moths of Monkwood Green by Dr Christopher Betts

seraphim	<i>Lobophora halterata</i>
setaceous Hebrew character	<i>Xestia c-nigrum</i>
shaded broad-bar	<i>Scotopteryx chenopodiata</i>
shark, the	<i>Cucullia umbratica</i>
shears, the	<i>Hoda plebeja</i>
shoulder stripe	<i>Earophila badiata</i>
shoulder-striped wainscot	<i>Mythimna comma</i>
shuttle-shaped dart	<i>Agrotis puta</i>
silver cloud	<i>Egira conspiciellaris</i>
silver-ground carpet	<i>Xanthorhoe montanata</i> ssp. <i>montanata</i>
silver Y	<i>Autographa gamma</i>
single-dotted wave	<i>Idaea dimidiata</i>
six-spot burnet	<i>Zygaena filipendulae</i>
six-striped rustic	<i>Xestia sexstrigata</i>
slender brindle	<i>Apamea scolopacina</i>
slender pug	<i>Eupithecium tenuiata</i>
sloe pug	<i>Pasiphila chloerata</i>
small angle shades	<i>Euplexia lucipara</i>
small blood-vein	<i>Scopula imitaria</i>
small brindled beauty	<i>Apocheima hispidaria</i>
small dotted buff	<i>Photedes minima</i>
small elephant hawk-moth	<i>Deilephila porcellus</i>
small emerald	<i>Hemistola chrysoprasaria</i>
small engrailed	<i>Ectropis crepuscularia</i>
small fan-foot	<i>Herminia grisealis</i>
small fan-footed wave	<i>Idaea biselata</i>
small magpie	<i>Anania hortulata</i>
small phoenix	<i>Ecliptopera silaceata</i>
small quaker	<i>Orthosia cruda</i>
small rivulet	<i>Perizoma alchemillata</i>
small scallop	<i>Idaea emarginata</i>
small seraphim	<i>Pterapherapteryx sexalata</i>
small spruce bell	<i>Epinotia nanana</i>
small square-spot	<i>Diarsia rubi</i>
small wainscot	<i>Denticucullus pygmina</i>
small white wave	<i>Asthena albulata</i>
small yellow wave	<i>Hydrelia flammeolaria</i>
smoky wainscot	<i>Mythimna impura</i>
snout, the	<i>Hypena proboscidalis</i>
speckled yellow	<i>Pseudopanthera macularia</i>
spectacle, the	<i>Abrostola triplasia</i>
spinach, the	<i>Eulithis mellinata</i>
spring usher	<i>Agriopsis leucophaearia</i>
square-spot rustic	<i>Xestia xanthographa</i>
straw dot	<i>Rivula sericealis</i>
straw underwing	<i>Thalpophila matura</i>
streamer, the	<i>Anticlea derivata</i>
suspected, the	<i>Parastichtis suspecta</i>
swallow prominent	<i>Pheosia tremula</i>
swallow-tailed moth	<i>Ourapteryx sambucaria</i>
tawny marbled minor	<i>Oligia latruncula</i>

The butterflies and moths of Monkwood Green by Dr Christopher Betts

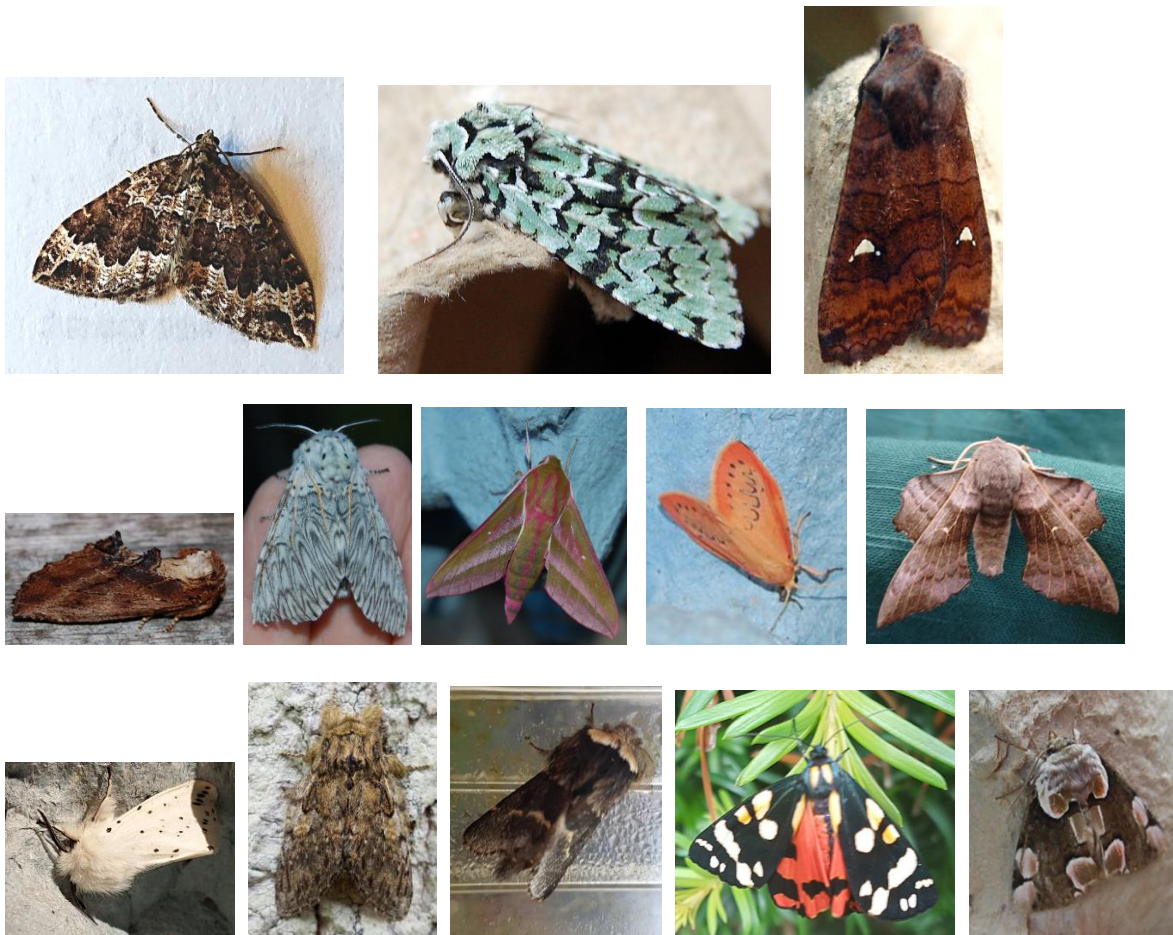
thistle bell
 treble-bar
 treble brown spot
 treble lines
 turnip moth
 twenty plume moth
 twin-spot carpet
 twin-spotted quaker
 uncertain, the
 v-pug
 varied coronet
 vestal, the
 water carpet
 waved black
 waved umber
 white ermine
 white marked
 white-pinion spotted
 white plume moth
 white-shouldered house moth
 white-strap sober
 willow beauty
 winter moth
 yellow-faced bell
 yellow horned
 yellow-line quaker
 yellow shell
 yellow-tail

Epiblema scutulana
Aplocera plagiata
Idaea trigeminata
Charanyca trigrammica (and ab. *Bilineata*)
Agrotis segetum
Alucita hexadactyla
Mesotype didymata
Anorthoa munda
Hoplodrina octogenaria
Chloroclystis v-ata
Hadena compta
Rhodometra sacraria
Lampropteryx suffumata
Parascotia fuliginaria
Menophra abruptaria
Spilosoma lubricipeda
Cerastis leucographa
Lomographa bimaculata
Pterophorus pentadactyla
Endrosis sacrcitrella (in houses on thee Green)
Syncopacma larseniella
Peribatodes rhomboidaria
Operophtera brumata
Notocelia cynosbatella
Achlya flavicornis
Agrochola macilenta
Camptogramma bilineata
Euproctis similis

A few photos (**NB. These are a different magnification scales**):



The butterflies and moths of Monkwood Green by Dr Christopher Betts



From top left: drinker moth larva, grey dagger larva, male four-spotted footman, grey arches, the spectacle, swallow prominent, water carpet, merveille du jour, the satellite, coxcomb prominent, puss moth, elephant hawk-moth rosy footman, poplar hawk-moth, white ermine, great prominent, December moth, scarlet tiger, peach blossom.

Photos © Dr Betts